

A Richer Life



 **LODHA**
GIARDINO

Master Plan



LEGEND

1. ENTRY & EXIT
2. TOWER DROPP OFF
3. FEATURE WALL WITH FLOWERING TREES
4. FAMILY POOL
5. KIDS' POOL
6. POOLSIDE CABANA
7. POOL DECK
8. PLAY VILLAGE
 - ADVENTURE PLAY
 - TODDLERS PLAY
9. TREEHOUSE
10. SENIOR CITIZENS GARDEN
11. MULTIPURPOSE LAWN
12. COMMUNITY GARDEN
13. PETS PARK
14. CHESS GARDEN
15. WORK FORM HOME GARDEN
16. TEA PAVILION
17. MEDITATION GARDEN
18. FERN & FOLIAGE GARDEN
19. READING CORNER
20. GANESH TEMPLE *
21. MULTIPURPOSE COURT
 - BASKETBALL / BADMINTON
22. GREENHOUSE
23. SPORTS FIELD



*Also accessible for other developments / outsiders; not exclusively part of Lodha Giardino.

^Certain areas for use by Lodha Giardino (Lodha Giardino Clubhouse & part of parking) & balance for other phases of larger development.

Typical floor plan | Tower 1 - 3 bed Ultima

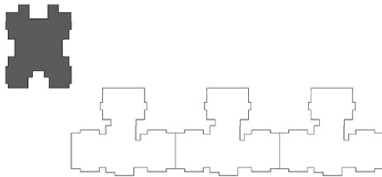
Unit 1

Unit 2

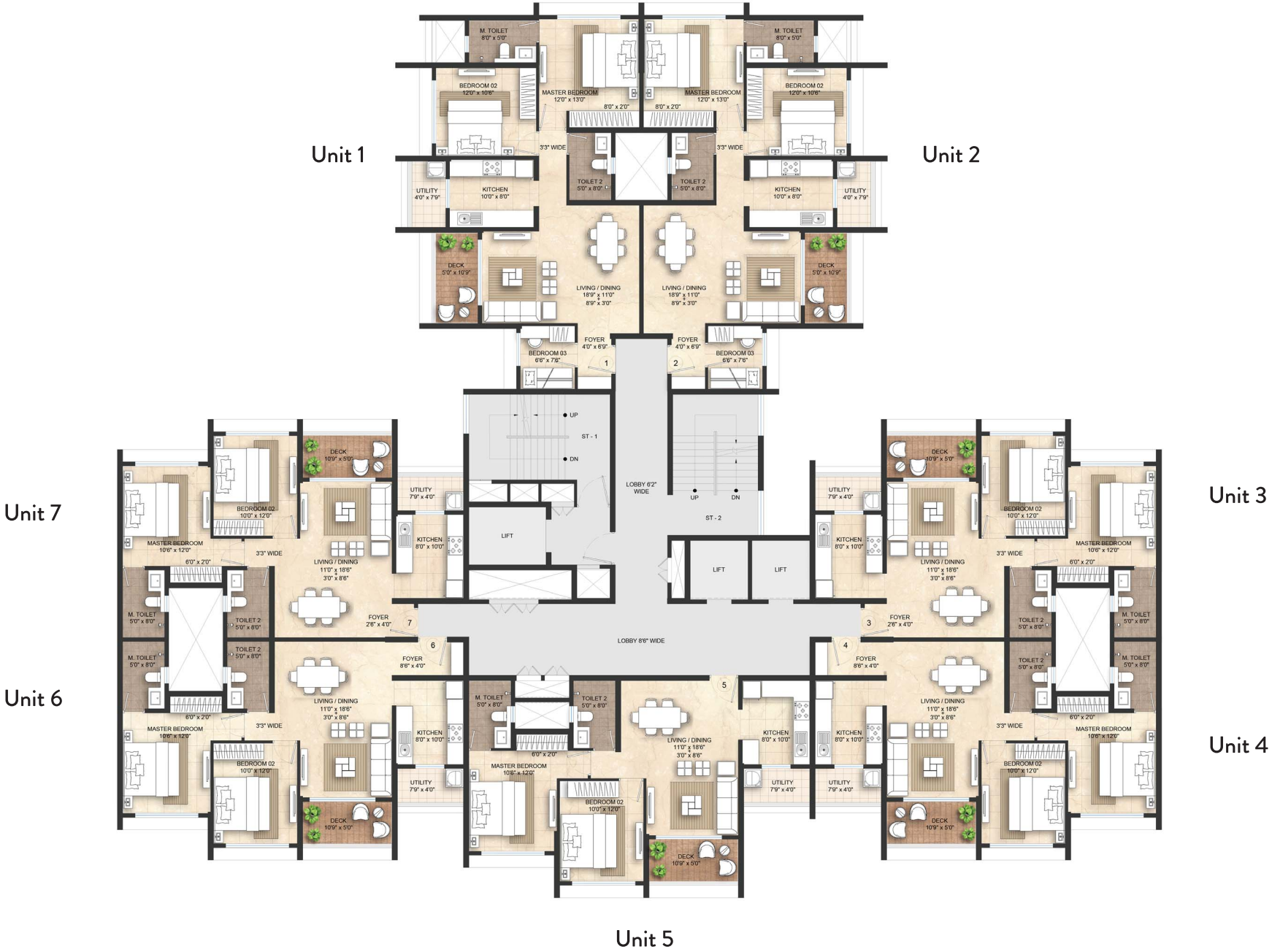


Unit 4

Unit 3

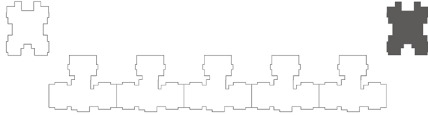


Typical floor plan | Tower 2, 3, 4 - 2 bed & 3 bed Optima



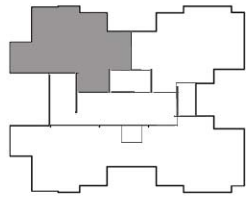
Typical floor plan | Tower 7 - 3 bed Ultima

Garden Side



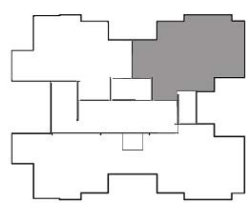
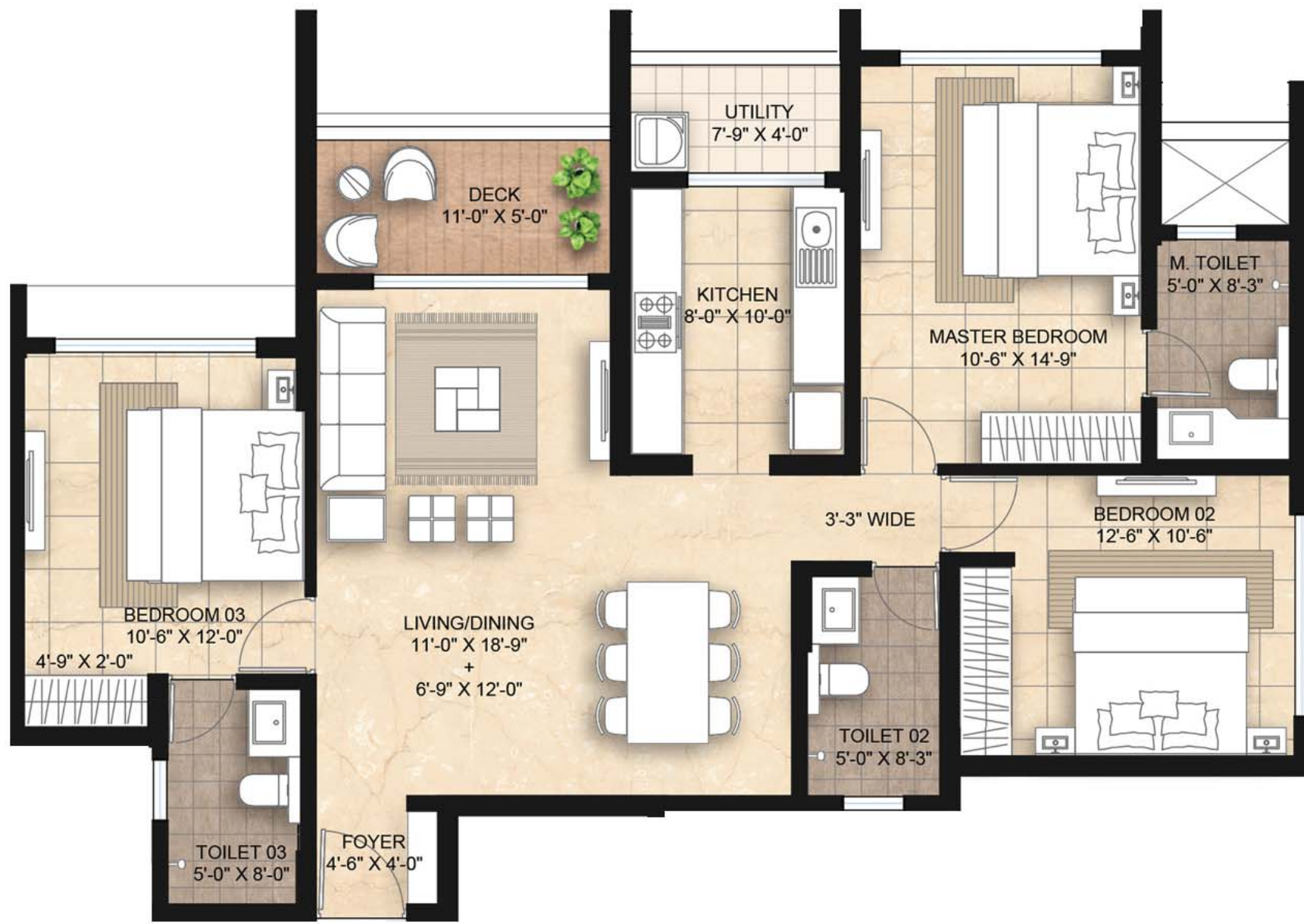
Tower 1 | 3 bed Ultima - Unit 1

Area: 1108 sqft



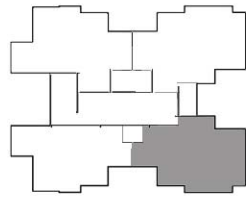
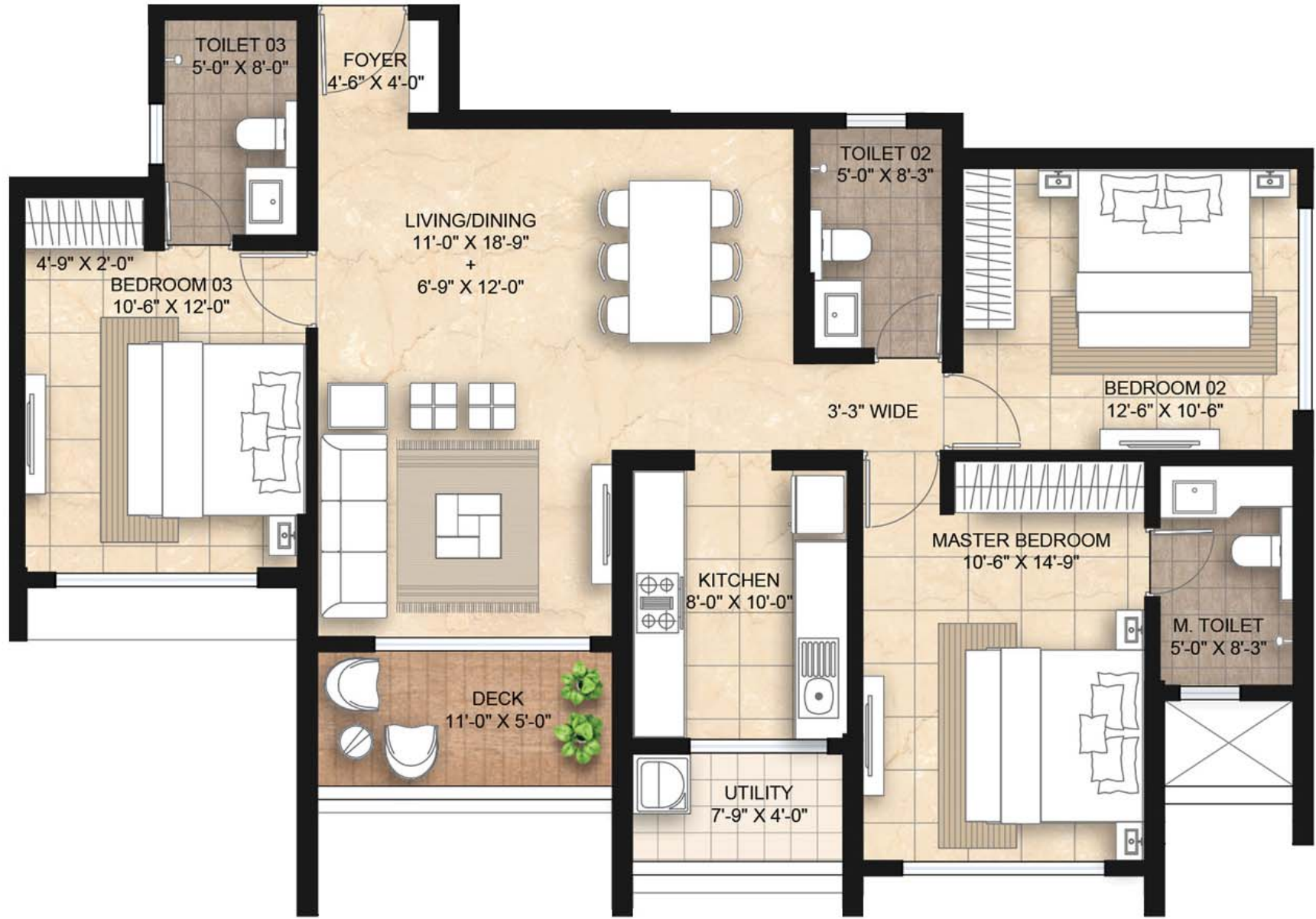
Tower 1 | 3 bed Ultima - Unit 2

Area: 1108 sqft



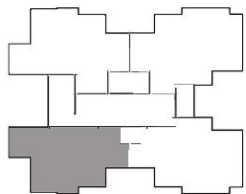
Tower 1 | 3 bed Ultima - Unit 3

Area: 1108 sqft



Tower 1 | 3 bed Ultima - Unit 4

Area: 1108 sqft



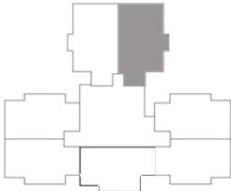
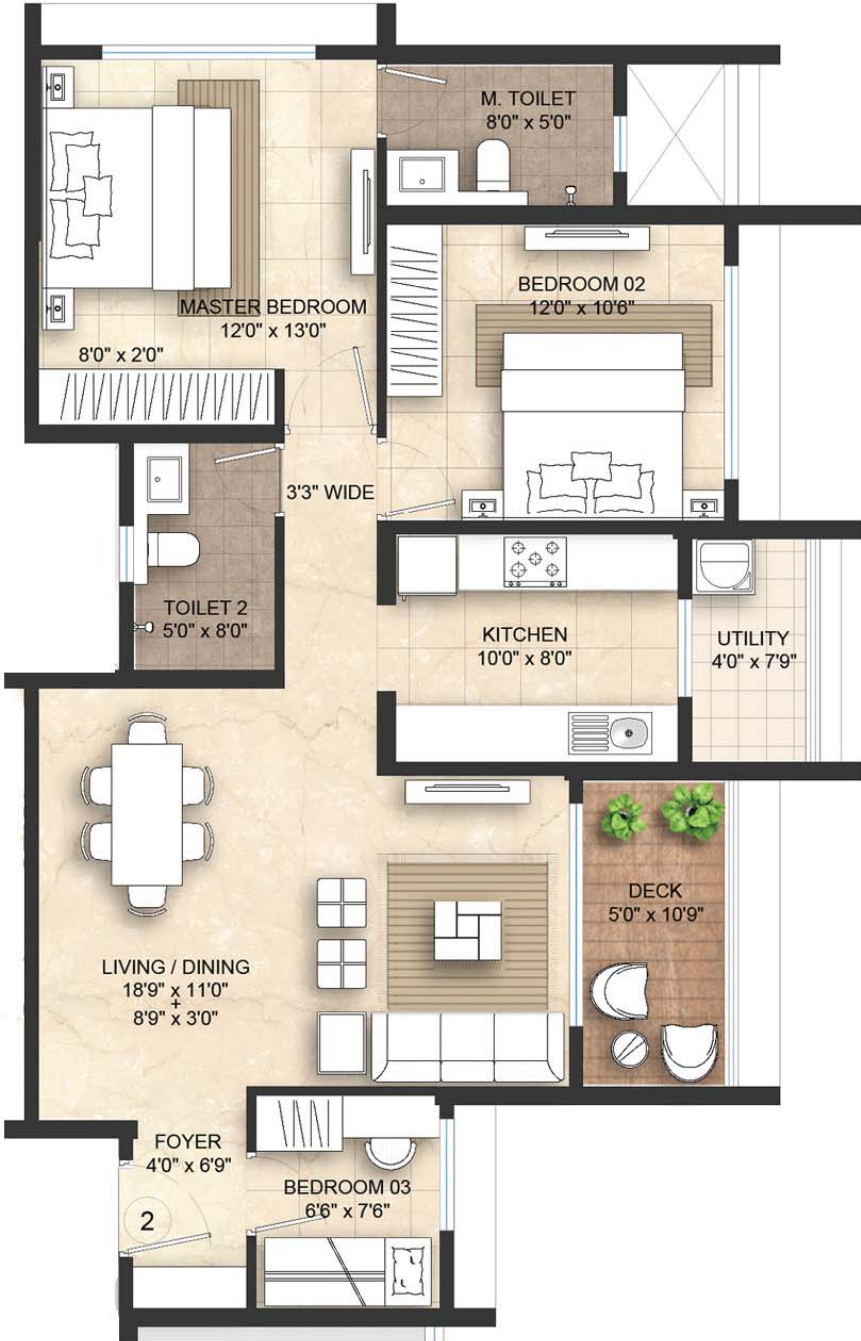
Tower 2, 3, 4 | 3 bed Optima - Unit 1

Area: 938 sqft



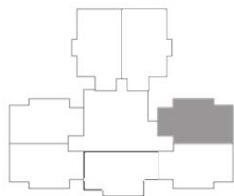
Tower 2, 3, 4 | 3 bed Optima - Unit 2

Area: 938 sqft



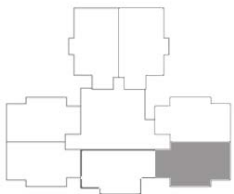
Tower 2, 3, 4 | 2 bed - Unit 3

Area: 822 sqft



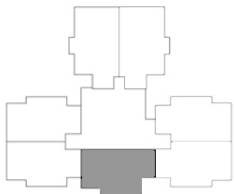
Tower 2, 3, 4 | 2 bed - Unit 4

Area: 850 sqft



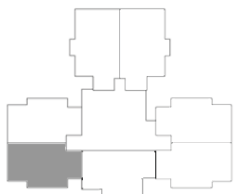
Tower 2, 3, 4 | 2 bed - Unit 5

Area: 807 sqft



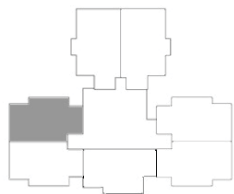
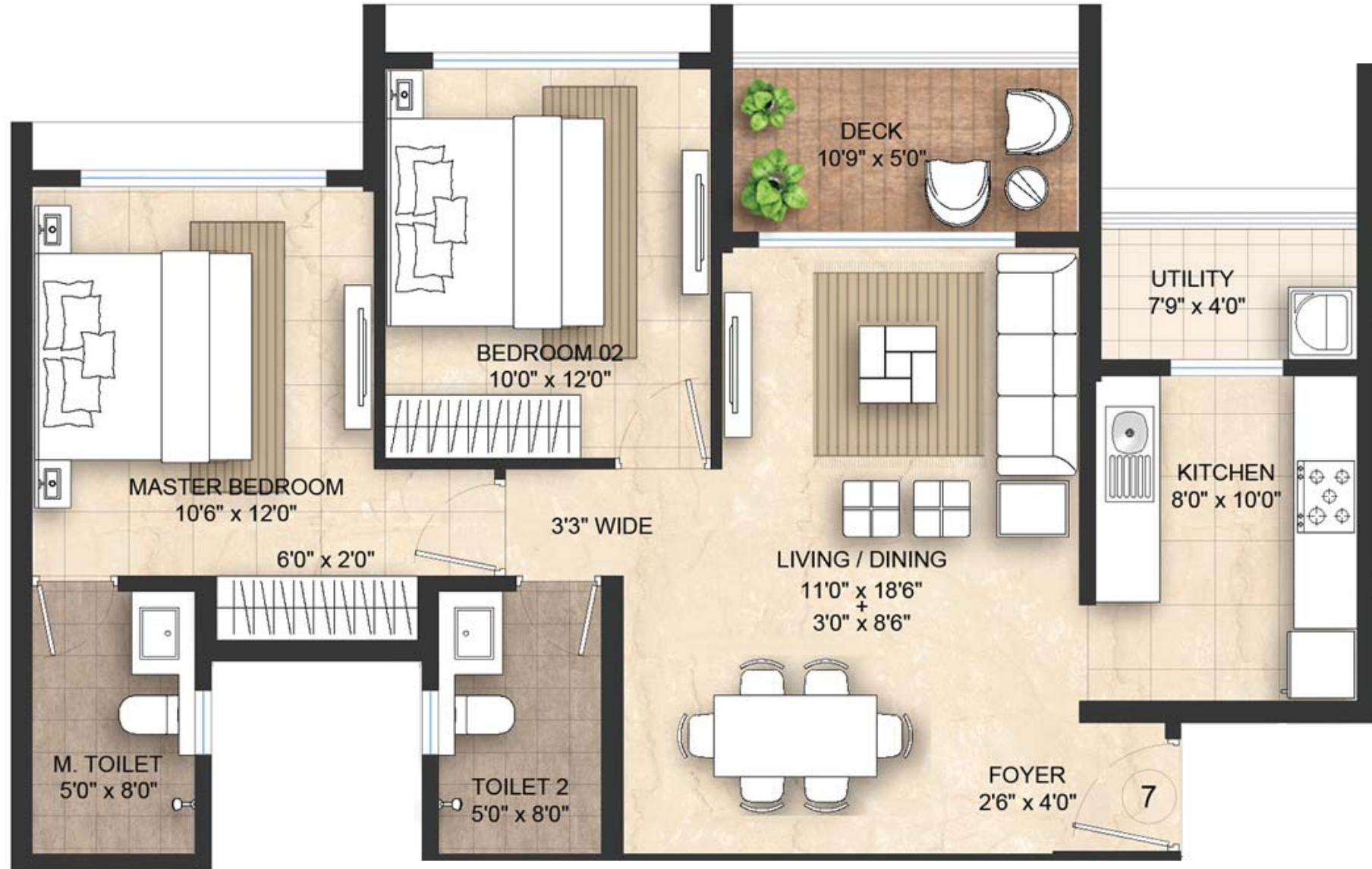
Tower 2, 3, 4 | 2 bed - Unit 6

Area: 850 sqft



Tower 2, 3, 4 | 2 bed - Unit 7

Area: 822 sqft



Tower 2, 3, 4 | 4 bed Premia - Unit 1 & 2

Area: 1885 sqft



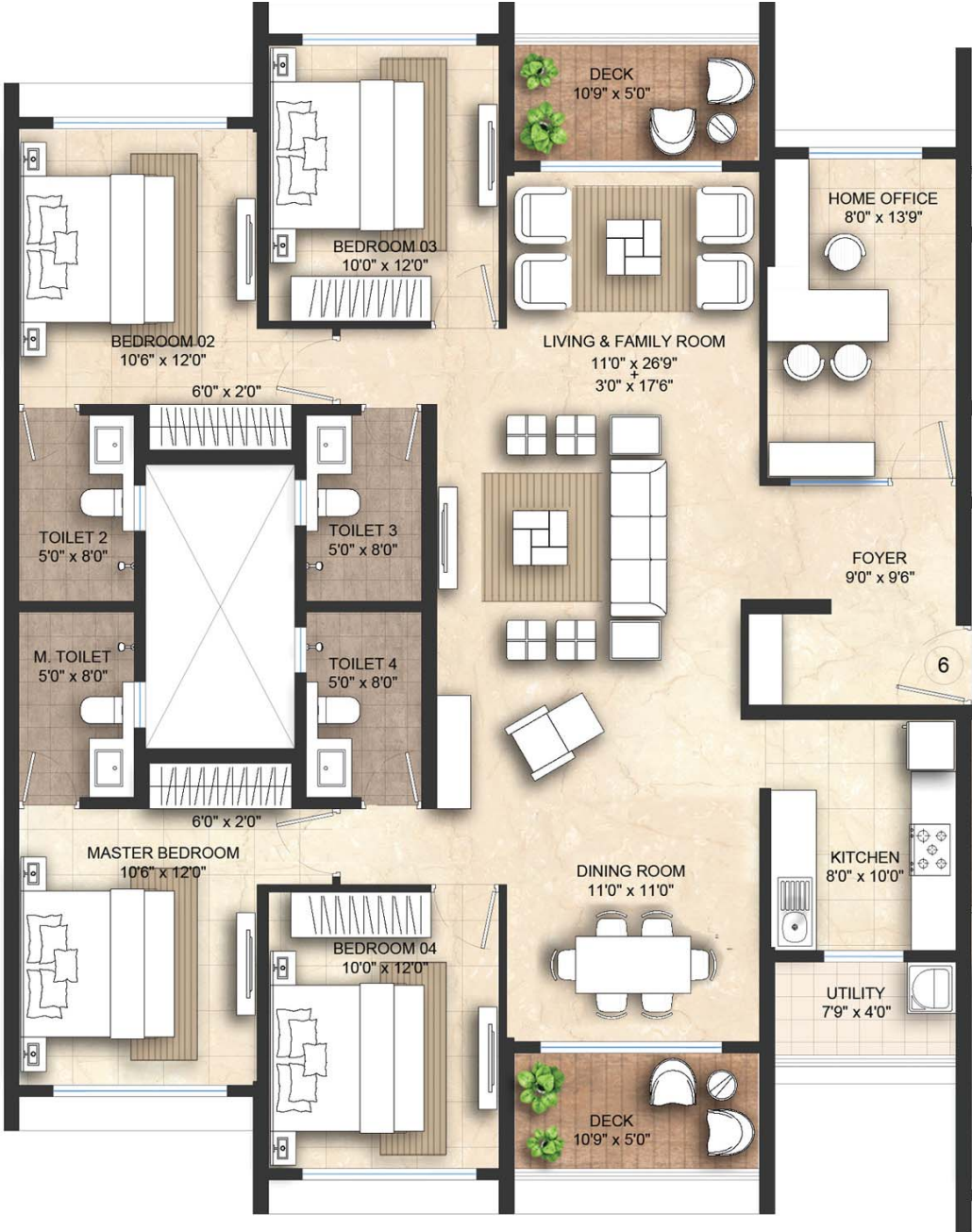
Tower 2, 3, 4 | 4 bed - Unit 3 & 4

Area: 1717 sqft



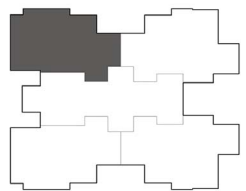
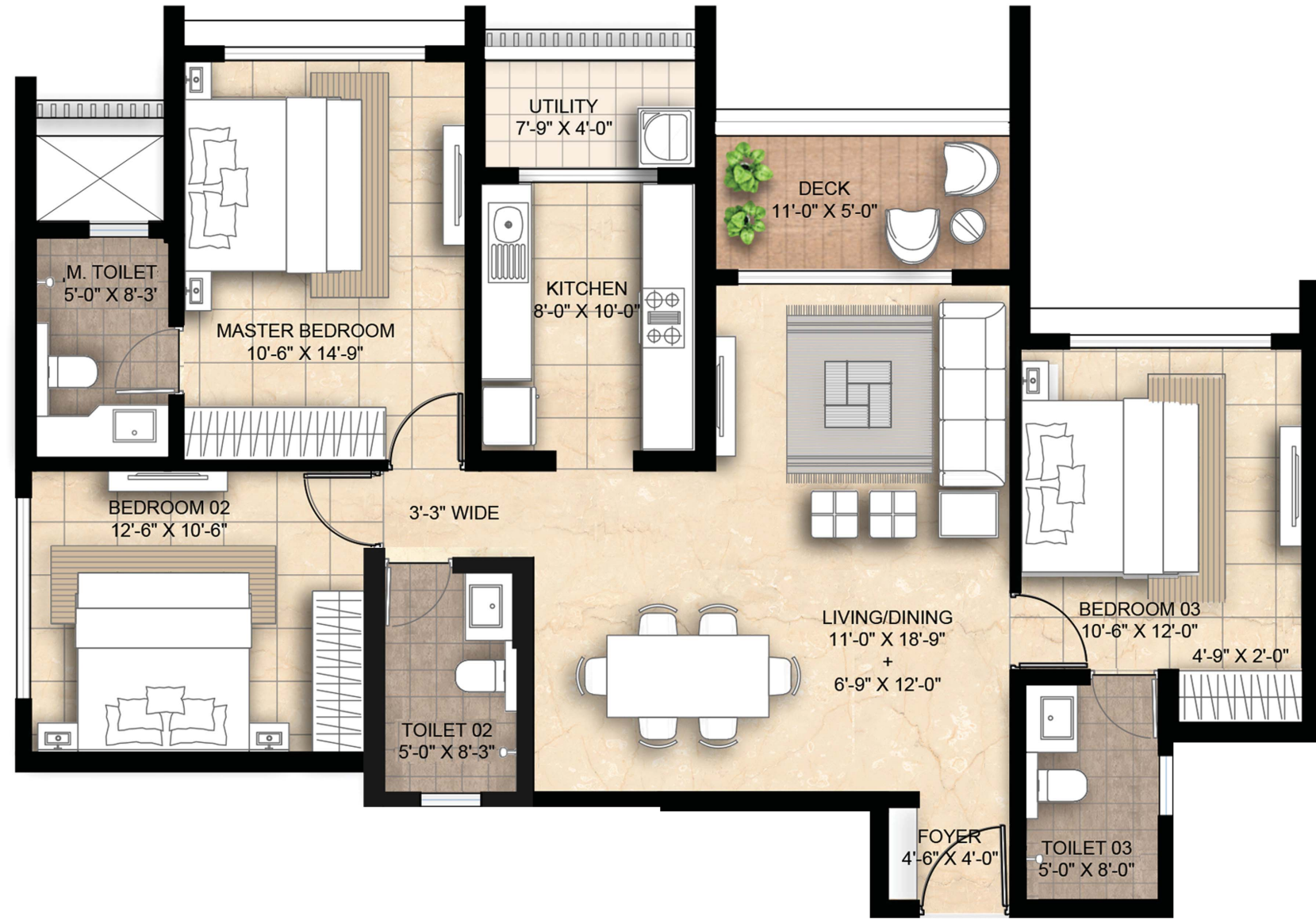
Tower 2, 3, 4 | 4 bed - Unit 6 & 7

Area: 1717 sqft



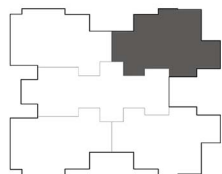
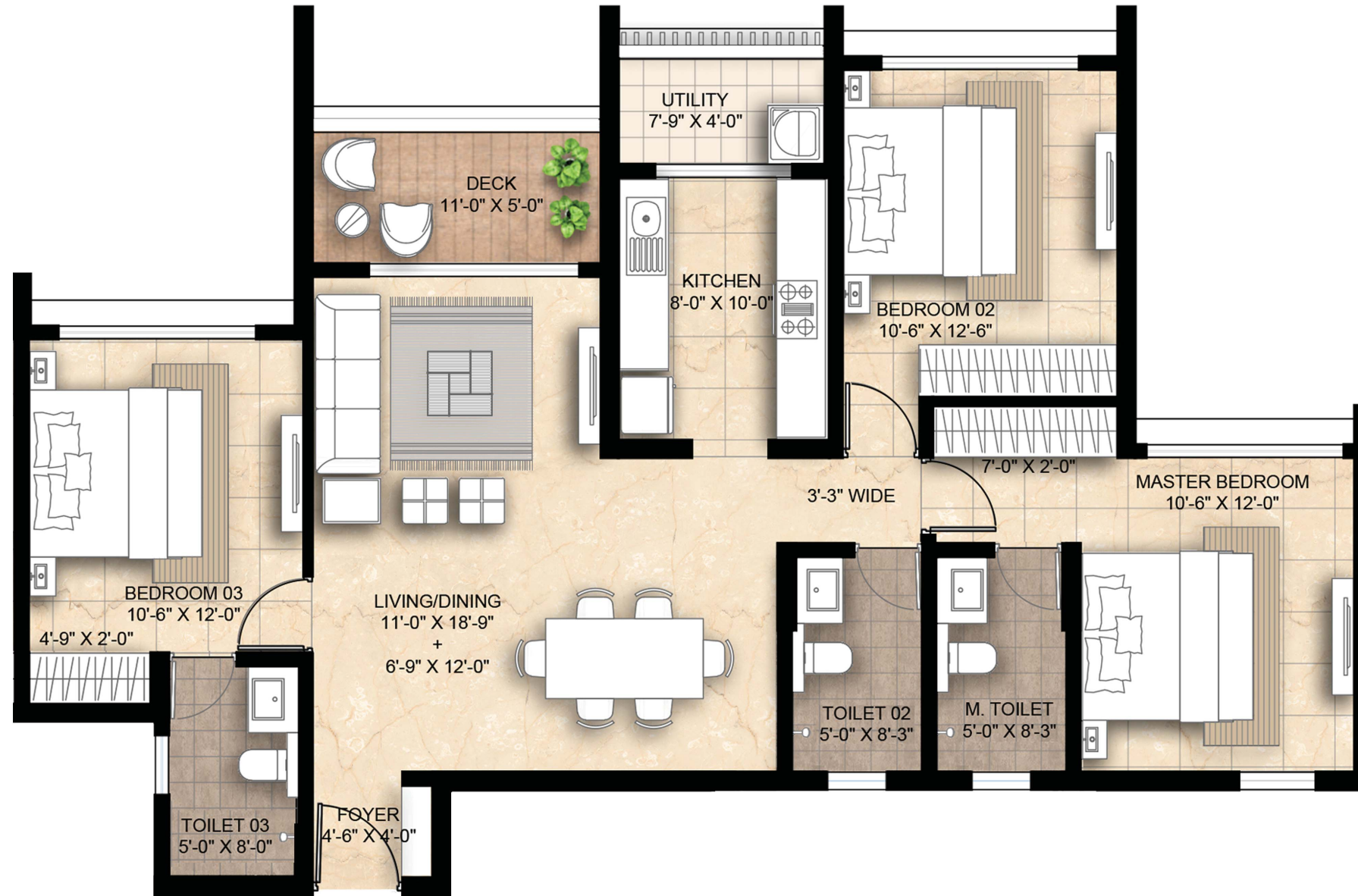
Tower 7 | 3 bed Ultima - Unit 1

Area: 1108 sqft



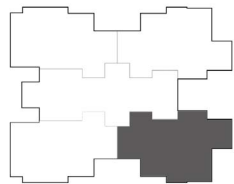
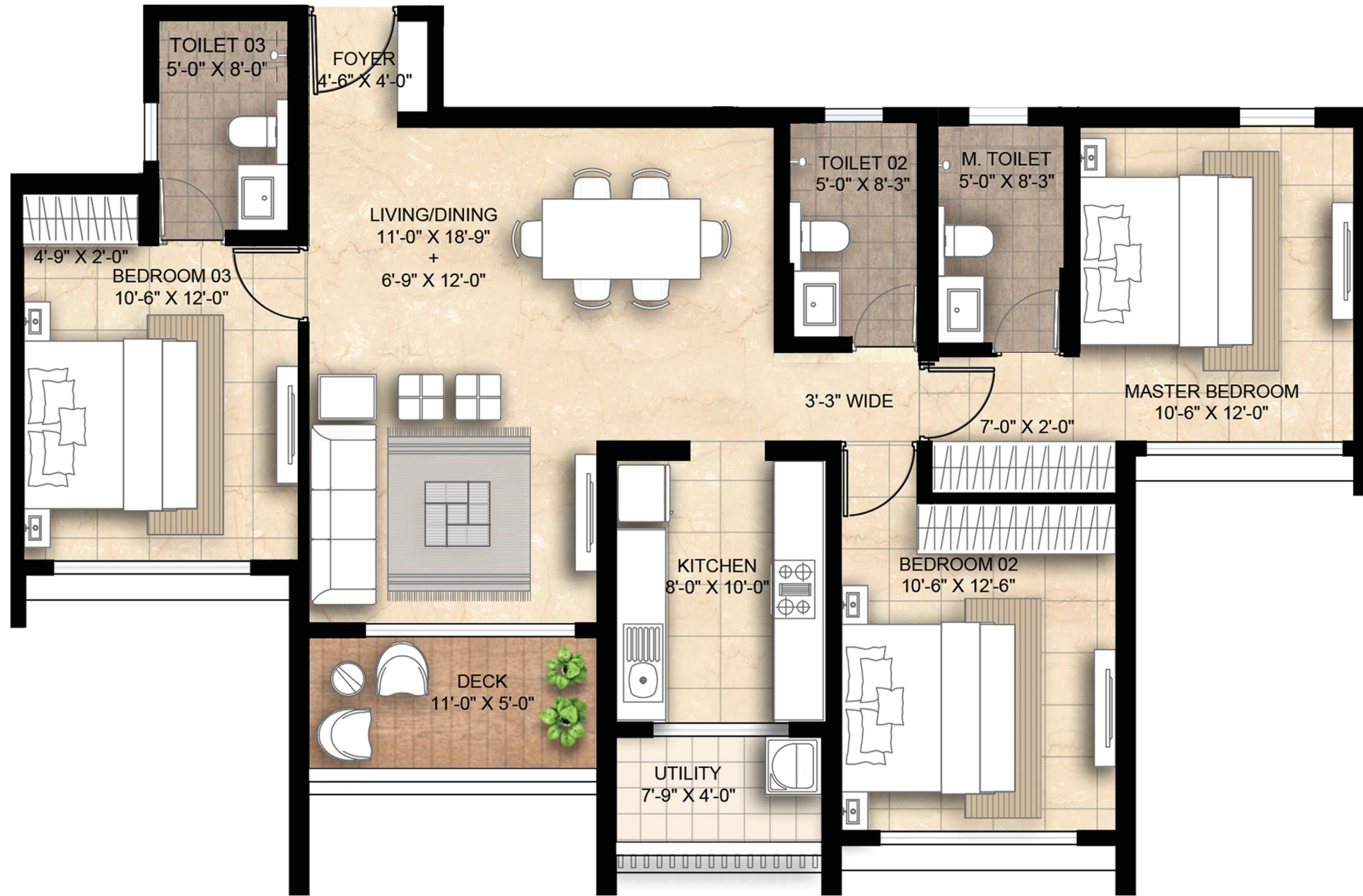
Tower 7 | 3 bed Ultima - Unit 2

Area: 1108 sqft



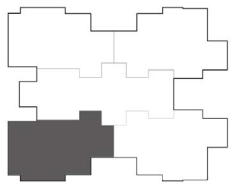
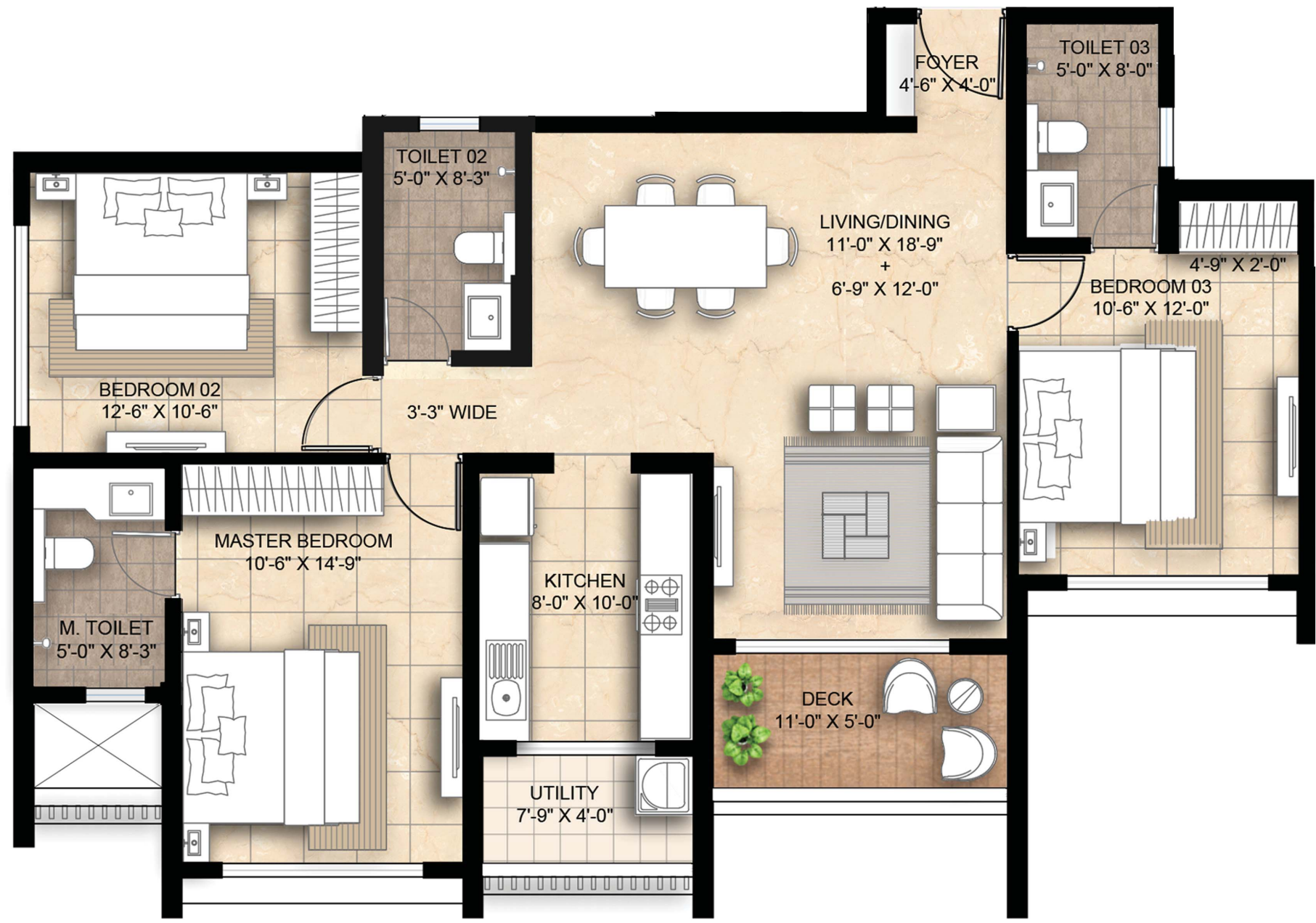
Tower 7 | 3 bed Ultima - Unit 3

Area: 1108 sqft



Tower 7 | 3 bed Ultima - Unit 4

Area: 1108 sqft



A Richer Life



 **LODHA**
GIARDINO

Sales Gallery: Lodha Giardino, Opp. Podar International School, Upper Kharadi, Pune – 412 207.
The project is registered with mahaRERA registration no. P52100047587